

SENCI POWER PRODUCTS

PARTS NAME CATALOG

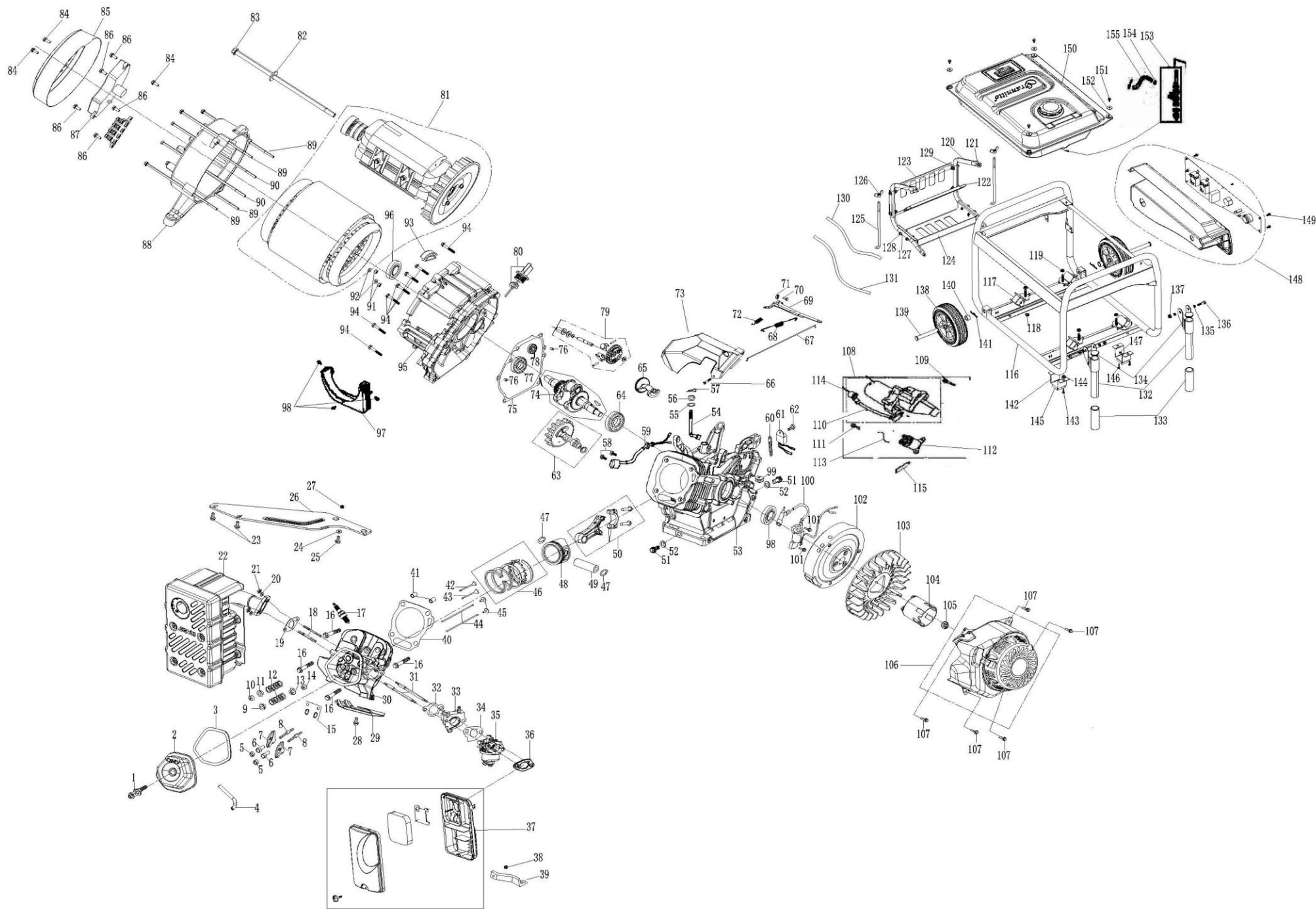
FIT TO MODEL : SC5000-II, SC6000-II, SC8000-II, SC9000-II, SC10000-II

230V 50Hz (For parts name selected only)



Version NO.1

2013. April



NO.	PART NUMBER	Part Name	QTY		NO.	PART NUMBER	PART NAME	QTY
1	95528-06060-00	BOLT, CYCL HEAD ASSY	1		35	16100-G88-00	CARBURETOR ASSY	1
2	12310-G88-01	COVER COMP, HEAD	1		36	16212-188-00	GASKET, A/C	1
3	12391-188-00	PKG, HEAD COVER 1.5mm	1		37	17250-190-01	A/C ASSY	1
4	15721-188-01	WASTE GAS TUBE	1		38	94050-06000-00	FLANGE NUT M6	1
5	14451-188-00	NUT, PIVOT M6	2		39	17239-188-00	SUPPORTING LEG A/C	1
6	90206-188-00	NUT, PIVOT ADJ M6 HEX NUT	2		40	12251-188-00	GASKET, CYLN HEAD	1
7	14431-188-00	ARM, VALVE ROCKER	2		41	94301-12020-00	DOWEL, PIN	2
8	90012-188-00	BOLT PIVOT	1		42	14721-188-00	EXH VALVE	1
9	14771-188-00	RETAINER, IN, VALVE SPRING	1		43	14711-188-01	IN VALVE	1
10	14781-188-00	ROTATOR, EXH VALVE	1		44	14410-188-00	ROD, PUSH	2
11	14773-188-00	RETAINER, EXH VALVE SPRING	1		45	14441-188-00	LIFTER VALVE	2
12	14751-188-00	VALVE SPRING	2		46	13010-188-00	RING SET, PISTON	1
13	14775-188-00	RETAINER, IN, VALVE SPRING	1		47	90551-188-00	CLIP PISTON PIN	2
14	12209-188-00	SEAL, IN VALVE	1		48	13101-188-00	PISTON	1
15	14791-188-00	LIMIT POSITION PANEL	1		49	13111-188-00	PIN PISTON	1
16	95701-10080-00-B01	BOLT FLANGE M10X80	4		50	13200-188-00	TIE ROD ASSY	1

17	98097-AGW30-00	SPARK PLUG NGK BP6ES	1	51	92800-12016-00	DRAIN PLUG	2
18	90047-08048-00-B01	BOLT, STUD M8X48.5	2	52	90601-12020-00	ALUM WASHER	2
19	18381-E88-00	WASHER, MUFFLER	1	53	12000-188-00-FD	CRANKCASE	1
20	94111-08000-00-B01	SPRING WASHER	2	54	16541-188-00	SHAFT, GOVERNOR ARM	1
21	94045-08000-00	HEX NUT M8	1	55	90442-08017-00	GASKET, GOVERNOR ARM	1
22	18310-SC55-01	COMP, MUFFLER	1	56	91203-188-00	SEAL, GOVERNOR ARM	1
23	94045-08000-00-B	FLANGE BOLT M6X12	2	57	94251-08000-00	PIN	1
24	94102-08000-00	WASHER ϕ 8	1	58	95701-06016-00	FLANGE BOLT M6X12	2
25	95701-08040-00	FLANGE BOLT M8X40	1	59	15510-188-00	OIL SENSOR	1
26	18311-SC55-00	SUPPORTING LEG, MUFFLER	1	60	44832-188-00	CLAMP, PIN LOCK	1
27	94050-08000-00	FLANGE NUT M8	1	61	15520-068-01	ALERT UNIT, OIL	1
28	95701-06012-02	FLANGE BOLT M6X12	1	62	95701-06012-00	FLANGE BOLT M6X12	1
29	19631-188-00	WIND LEAD COVER	1	63	14100-188-01	CAM SHAFT ASSY	1
30	12210-188-01	CYCL HEAD	1	64	96100-188-00	BEARING	1
31	90043-0608110-00	BOLT, STUD M6XM8X110	2	65	13315-190-00	GOVERNOR SHAFT	1
32	16212-188-01	GASKET, IN VALVE	1	66	95701-06012-00	FLANGE BOLT	1
33	16211-E88-00	INSULATOR, CARB COMP	1	67	16555-188-00	GOVERNER ROD	1
34	16221-188-01	PKG, CARB	1	68	16584-188-00	ADJ SPRING	1

NO.	PART NUMBER	PART NAME	QTY
69	16551-188-00	GOVERNOR ARM	1
70	72880-06021-00	BOLT, GOVERNOR ARM	1
71	95701-06012-00	FLANGE NUT	1
72	16562-188-00	SPRING THROTTLE RETURN	1
73	16580-188-00	CONTROL ASSY	1
74	13310-188-00	CRANK ASSY	1
75	11381-188-00	GASKET, CARANKCASE HEAD	1
76	94301-08014-00	DOWEL, PIN	2
77	96100-188-00	BEARING 6207	1
78	96110-188-00	BEARING 6207	1
79	16506-188-00	GOVERNOR ASSY	1
80	15600-188-00	DIPSTICK	1
81	31200-G5A1-0000	MOTOR ASSY	1
82	90486-10500-00	PLATE WASHER	1
83	95701-10250-00	FLANGE BOLT, ROTORM10X250	1
84	95701-05012-00	FLANGE BOLT M5X12	3
85	31203-188-02	END COVER	1

NO.	PART NUMBER	PART NAME	QTY
86	95701-05016-00	FLANGE BOLT M5X16	5
87	30300-T52-00	AVR 5KW	1
88	31170-188-00	GENERATOR STAY	1
89	95701-06160-00	FLANGE BOLT M6X1160	4
90	92101-05198-00-B01	FLANGE BOLT M5X198	2
91	90305-05000-00-B01	BALL NUT M5	2
92	94111-05000-00-B01	SPRING GASKET	2
93	17220-188-00	ANTI-DUCT RUBBER	1
94	95701-08040-00	FLANGE BOLT	7
95	11300-188-02	COVER, CRANKCASE	1
96	91201-188-00	OIL SEAL	1
97	11315-182-00	WIND LEAD COVER	1
98	95701-05012-00	FLANGE BOLT M5X12	3
99	45450-168-00	RUBBER PLATE	1
100	30510-190-00	IG COIL ASSY	1
101	95701-06030-00	FLANGE BOLT	2
102	31110-188-00-FD	FLYWHEEL COMP	1

NO.	PART NUMBER	PART NAME	QTY
103	19511-188-00	COOLING FAN	1
104	28451-188-00	STARTING CUP	1
105	94050-16000-00	FLANGE NUT M16	1
106	28400-188-13	RECOIL STARTER ASSY	1
107	95701-06012-00	FLANGE BOLT M6X12	5
108	31201-188-00	STARTING MOTOR ASSY	1
109	95701-08032-00-B01	FLANGE BOLT M8X32	2
110	35850-188-00	CHARGING COIL AC20	1
111	95701-06030-00-B01	FLANGE BOLT M6X30	2
112	38300-188-00	STARTING RELAY	1
113	38310-188-00	CONNECTING CORD	1
114	30710-188-00	CAP, RELAY	1
115	44831-188-00-FD	CORD FIX PLATE	1
116	51100-G5A1-07B4	FRAME ASSY	1
117	77320-188-00	BOTTOM RUBBER A	4
118	94050-08000-00	FLANGE NUT M8	4
119	94050-10000-00	FLANGE NUT M10	4

NO.	PART NUMBER	PART NAME	QTY
120	31521-188-00-B4	BATTERY SUPPORTING LEG	2
121	95701-06012-00	FLANGE BOLT	4
122	31512-CUN65E-00	BATTERY PLATE	1
123	31514-CUN65E-00	BATTERY COVER	1
124	31515-CUN65E-00	EQUIPMENT PLATE	1
125	31513-H310-01	BOLT M6X215	2
126	90325-06000-00	NUT	2
127	90486-CUN65E-00	FRAME WASHER	8
128	95701-06030-00	FLANGE BOLT	8
129	94050-06000-00	FLANGE NUT	8
130	32410-CAG70-00	NEGA CORD, BATTERY	1
131	32430-CAG70-00	POSITIVE CORD, BATTERY	1
132	51320-G6A1-02B4	HANDLE ASSY	2
133	53135-BE20-00	PLASTIC HANDLE SET	2
134	50620-SU60-00	RUBBER HANDLE TUBE	2
135	90490-T70-00	WASHER	4
136	95701-08060-00	FLANGE BOLT M8X60	2

NO.	PART NUMBER	PART NAME	QTY
137	94050-08000-00	FLANGE NUT M8	2
138	42710-AGB75E-00	WHEEL	2
139	44300-CP55E-00	COTTER PIN	2
140	90325-BG55E-00	GROMMET	2
141	94251-AB80-00	CLAMP	2
142	50500-CUA60E-00-B4	SUPPORTING ASSY	2
143	95701-08016-00	FLANGE BOLT M8X16	4
144	94050-08000-00	FLANGE NUT M8	4
145	50710-T70-01	RUBBER GASKET, SUPPORTING	2
146	95701-06020-00	FLANGE BOLT M6X20	2
147	94050-06000-00	FLANGE NUT M6	2
148	52000-G5A1-0700	CONTROL PANEL ASSY	1
149	95701-06020-00	FLANGE BOLT M6X20	4
150	54100-G5A1-03RE	FUEL TANK ASSY	1
151	95701-06025-00	FLANGE BOLT M6X25	4
152	90486-06022-00	GASKET, TANK	4
153	16950-168-00	FUEL SWITCH	1

NO.	PART NUMBER	PART NAME	QTY
154	95003-CT08-00	CLAMP	2
155	95001-04500850-00	FUEL TUBE	0.18